

# INSECTS AND MITES IN STORED GRAIN

Common species shown (over 50 species may occur in grain stores).

Correct identification is important. For advice, contact Fera on 0300 100 0321 or [info@fera.co.uk](mailto:info@fera.co.uk)



**Saw-toothed grain beetle**  
*Oryzaephilus surinamensis*



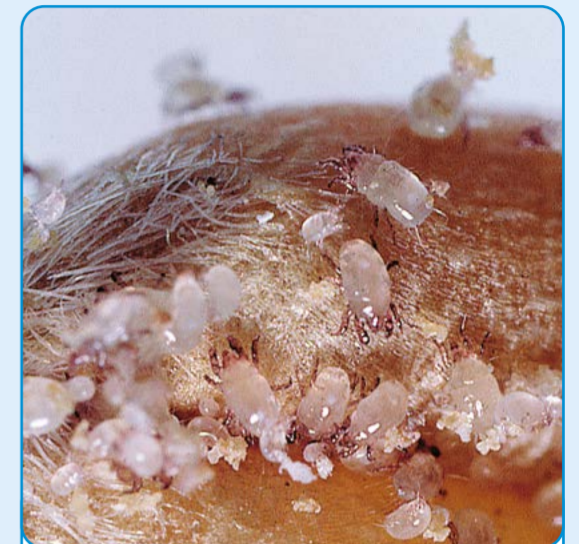
**Rust-red grain beetle**  
*Cryptolestes ferrugineus*



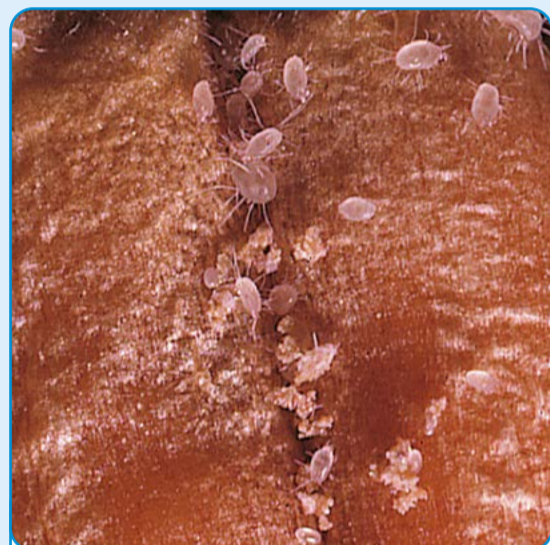
**Grain weevil**  
*Sitophilus granarius*



**Foreign grain beetle**  
*Ahasverus advena*



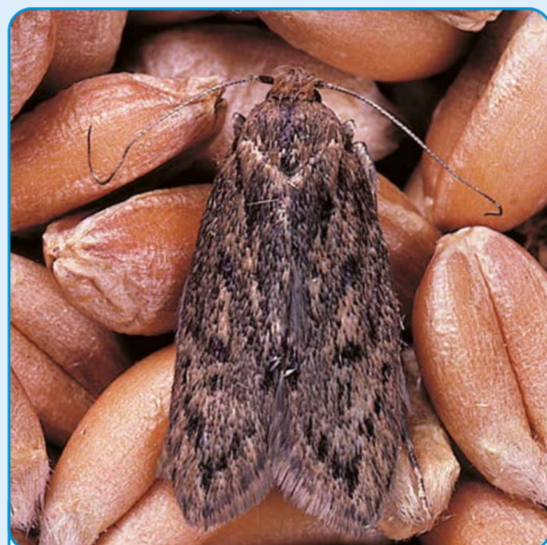
**Flour mite**  
*Acarus siro*



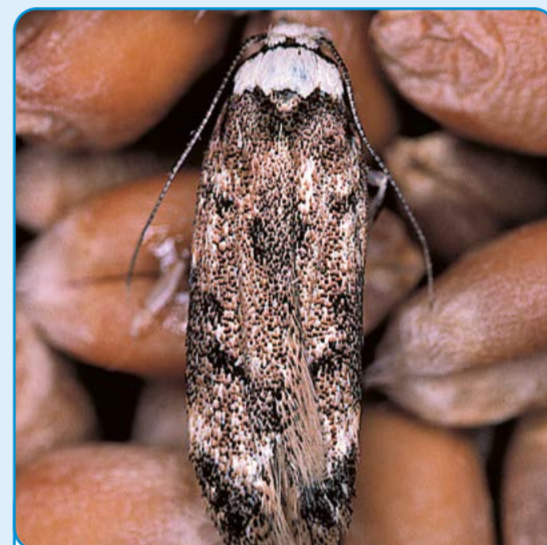
**Cosmopolitan food mite**  
*Lepidoglyphus destructor*



**Lesser grain borer**  
*Rhyzopertha dominica*



**Brown house moth**  
*Hofmannophila pseudospretella*



**White-shouldered house moth**  
*Endrosis sarcitrella*



**Hairy fungus beetle**  
*Typhaea stercorea*



**White-marked spider beetle**  
*Ptinus fur*



**Mould beetles**  
*Cryptophagus species*



**Plaster beetle**  
*Lathridiidae*



**Booklice (two species shown)**  
*Psocoptera*



**Rove beetle**  
*Staphylinidae*



**Ground beetle**  
*Carabidae*



**Narrow-necked harvest beetle**  
*Anthicus floralis*



**Clover weevil**  
*Sitona species*



**Predatory mite**  
*Gamasina*



**Predatory mite**  
*Cheyletus eruditus*



- Primary pest; grain-damaging species
- Secondary pest; mould or hygiene-related species
- Non-damaging or stray species

For best practice grain sampling and storage for cereals and oilseeds, consult the Grain sampling guide and the Grain storage guide, or go to: [ahdb.org.uk/grain-storage](http://ahdb.org.uk/grain-storage)

We would like to acknowledge the work of Fera and Gafta, which has contributed to the creation of this publication.

For additional copies of this poster contact [publications@ahdb.org.uk](mailto:publications@ahdb.org.uk) or 024 7799 0069. AHDB Cereals & Oilseeds is a part of the Agriculture and Horticulture Development Board (AHDB). © Agriculture and Horticulture Development Board 2024. All rights reserved.

